



2 0 1 9



JOIN MAYOR ADRIAN O. MAPP
FOR THIS YEAR'S



STATE OF THE CITY ADDRESS

SMARTER SAFER STRONGER

Mayor Mapp will outline the successes and progress of the City of Plainfield in this 150th year of its incorporation, and share the vision for 2020 and beyond.



**MARCH 21
2019**

PLAINFIELD HIGH
SCHOOL
AUDITORIUM

7:00 PM

If you have questions, please contact us at
communications@plainfieldnj.gov or 908-753-3015.



MARCH 23, 2019

2ND ANNUAL SOCIAL SERVICES NETWORKING SYMPOSIUM

The Open Hand Ministry

The Open Hand Ministry of the Shiloh Baptist Church invites you to join us as we build relationships with social service and public health providers to better meet the social, emotional, psychological, health, and spiritual needs of our community.

Shiloh awaits you with an “open hand” to help you better understand and maneuver through a complicated service provider system. **March 23, 2019, 1pm – 3pm at the Shiloh Baptist Church.** This event is Free. For more information please contact Min. Morris Lucky at (908) 754-3353 ext. 101.

This year’s Symposium will feature a Panel Discussion on Homelessness and Housing

Meet experts in the field of HELP!

Veterans Care, Elderly Care, Food & Clothing, and much more!

\$\$ Gift Card giveaways

Lunch served



Shiloh Baptist Church

**SHILOH BAPTIST
CHURCH
REV. HODARI K.
HAMILTON, SR.
PASTOR**

515 W. 4th St.
Plainfield, NJ 07060

www.shilohplainfield.org



WOMEN IN CONSTRUCTION

RECRUITMENT EVENT

DATE: MONDAY, MARCH 25, 2019

TIME: 6:00 – 8:00 PM

**LOCATION: PLAINFIELD PUBLIC LIBRARY
800 PARK AVE, PLAINFIELD, NJ 07060**

**EARN \$100,000 AFTER 5 YEARS AS A UNION
CONSTRUCTION WORKER**

Opportunities

Elizabeth Development Company in Partnership with the City of Plainfield and the NJDOL is offering Union Pre-Apprenticeship testing and on-the-job training to women for jobs in the Laborers, Carpenters, Plumbers, Pipefitters and other Construction Trade Unions.

FREE CLASSES, Pre-testing, Training & Placement!

EDC will pay up to \$600 for the costs of apprenticeship tests, OSHA 30 and Union initiation fees. We can also assist you with driver's license restoration.



City of Plainfield

Mayor Adrian O. Mapp

Contact

Maira Santana

908-289-0262

msantana@edcnj.org

**Applications Available
at**

Plainfield City Hall

**Open to all Union &
Essex County residents**

Elizabeth Development
Company

205 First St.
Elizabeth, NJ 07206

908-289-0262

msantana@edcnj.org



Join the Community FoodBank of NJ's
Food Service Training Academy!

NEW CLASS STARTS April 15 - July 31, 2019



- Tuition and public transit are **FREE** for those who qualify.
- Receive **HANDS-ON** instruction from classically trained chefs in a commercial kitchen.
- Participants are placed in **INTERNSHIPS** and provided with employment services.
- You **MUST** have a high school diploma or GED.

Call 908-355-3663 x 240 for more information

31 Evans Terminal Rd | Hillside, NJ 07205 | cfbnj.org



CUPCAKES@LIVAYSWEETSHOP.COM • WWW.LIVAYSWEETSHOP.COM



   #THEHOMELESSPERIOD

For homeless women, it really is that dreaded time of the month. With limited or no access to sanitary products, they're often forced to go without.

**SATURDAY MARCH 23RD AND
SUNDAY MARCH 24TH 2019**

**LIVAY SWEET SHOP IS COLLECTING
UNOPENED BOXES OF SANITARY NAPKINS
TAMPONS AND FEMININE WIPES**

— As a thank you pink Heart Cookie —

All Sanitary items collected will be dropped off at different locations in the city of Plainfield and surrounding areas

DROP OFF LOCATIONS

**104B Watchung Ave
Plainfield NJ 07060**

**908.755.1313
www.LIVaySweetShop.com**

NEWLY RENOVATED



4 Bed, 2 Full Baths,
central air, gas
heat, yard, basement,

FOR SALE

LOW INCOME BUYERS

908-769-6335



PREMIER Community Development Corporation

510 East Front Street Plainfield NJ 07060

1315 SLOANE BLVD

Beautiful property in Cedarbrook
Park area of **PLAINFIELD**

Listing Price: \$315,000

"Home Program" HUD subsidizes up to
\$200,000 if needed to reduce price of house
& down payment assistance

WORKSHOP

The A-B-Cs of Home-based Businesses

Thursday, March 28, 2019 | 6:00 - 8:30 pm

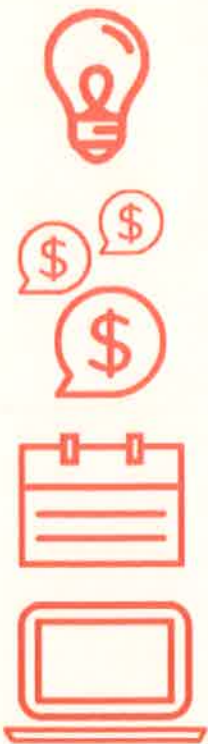
Union County College - Plainfield Campus

232 East Second Street, Plainfield, NJ

LEARN:

- Legal and financial requirements
- Matching your skill-set with your business idea
- Marketing Your Home-based Business
- And MORE ...

LIGHT REFRESHMENTS SERVED



FREE

Register at
973.353.1927

Investing in the success and sustainability of
women-owned small businesses

Loan Sale!

*Exclusively for
Women Business
Owners*



**Apply now to enjoy a 2% interest rate
reduction on loans up to \$50,000!**

- ✓ Fixed rate, 6 year terms
- ✓ As little as 10% down
- ✓ No fees or prepay penalties

- ✓ Pay down expensive debt
- ✓ Purchase supplies, inventory, equipment, etc.
- ✓ Working capital, etc

**Call today for information:
908-527-1166**

Made possible by the generous support of the

TORY BURCH  FOUNDATION
CAPITAL PROGRAM

Powered by **Bank of America** 